



# SLIMLINE PROTEA

Big, bulky power outlets are a thing of the past. Our Slimline Protea range is the most compact of our products.





# PROTEA

The Protea above desk power and data unit has been designed to fit in with today's contemporary office desking and design.

A modular aluminium-based workstation power outlet system that is completely customisable, with the user able to specify the exact number and type of power, voice/data, switches and protection devices they require. The layout, configuration and colours can also be ordered to suit individual requirements.

The products shown over the next few pages are the most popular configurations and these are held in stock.



2x UK individually fused



*All standard stock options are supplied with a 500mm drop lead to GST type Male Connector and a Universal Desk Clamp.*

- ☐ S2-200-13-DC1
- ☒ S2-200-10-DC1

2x UK individually fused | 2x data points



- ☐ S2-202-1352-DC1 Cat5e, 2m
- ☐ S2-202-1353-DC1 Cat5e, 3m
- ☐ S2-202-1355-DC1 Cat5e, 5m
- ☐ S2-202-1362-DC1 Cat6, 2m
- ☐ S2-202-1363-DC1 Cat6, 3m
- ☐ S2-202-1365-DC1 Cat6, 5m
- ☒ S2-202-1052-DC1 Cat5e, 2m
- ☒ S2-202-1053-DC1 Cat5e, 3m
- ☒ S2-202-1055-DC1 Cat5e, 5m
- ☒ S2-202-1062-DC1 Cat6, 2m
- ☒ S2-202-1063-DC1 Cat6, 3m
- ☒ S2-202-1065-DC1 Cat6, 5m

2x UK individually fused | with switch

2x UK individually fused | 2x data points | with switch

■ **S2-200-20-DC1**



**S2-202-2052-DC1** Cat5e, 2m  
**S2-202-2053-DC1** Cat5e, 3m  
**S2-202-2055-DC1** Cat5e, 5m  
**S2-202-2062-DC1** Cat6, 2m  
**S2-202-2063-DC1** Cat6, 3m  
**S2-202-2065-DC1** Cat6, 5m

2x UK individually fused | dual Smart Charge USB

Dual USB Smart Chargers with  
intelligent device recognition



□ **S2-2S0-13-DC1**

■ **S2-2S0-10-DC1**

2x UK individually fused | 2x data points | dual Smart Charge USB

Dual USB Smart Chargers with  
intelligent device recognition



**S2-2S2-1352-DC1** Cat5e, 2m  
**S2-2S2-1353-DC1** Cat5e, 3m  
**S2-2S2-1355-DC1** Cat5e, 5m  
**S2-2S2-1362-DC1** Cat6, 2m  
**S2-2S2-1363-DC1** Cat6, 3m  
**S2-2S2-1365-DC1** Cat6, 5m

**S2-2S2-1052-DC1** Cat5e, 2m  
**S2-2S2-1053-DC1** Cat5e, 3m  
**S2-2S2-1055-DC1** Cat5e, 5m  
**S2-2S2-1062-DC1** Cat6, 2m  
**S2-2S2-1063-DC1** Cat6, 3m  
**S2-2S2-1065-DC1** Cat6, 5m

3x UK individually fused | 2x data points



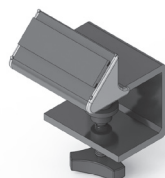
**S2-302-1052-DC1** Cat5e, 2m  
**S2-302-1053-DC1** Cat5e, 3m  
**S2-302-1055-DC1** Cat5e, 5m  
**S2-302-1062-DC1** Cat6, 2m  
**S2-302-1063-DC1** Cat6, 3m  
**S2-302-1065-DC1** Cat6, 5m

4x UK individually fused | 2x data points

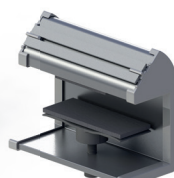


**S2-402-1052-DC1** Cat5e, 2m  
**S2-402-1053-DC1** Cat5e, 3m  
**S2-402-1055-DC1** Cat5e, 5m  
**S2-402-1062-DC1** Cat6, 2m  
**S2-402-1063-DC1** Cat6, 3m  
**S2-402-1065-DC1** Cat6, 5m

We stock a wide range of brackets and fixings to satisfy every installation requirement. This is a selection of our most popular.



DC1



DC2

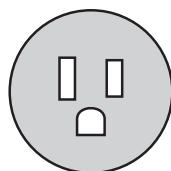


DC5

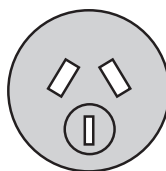


DC6

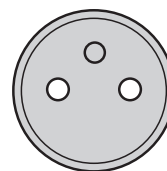
**POWER LOGIC** are the recognised market leader throughout the world. As such we can supply all our power products with a vast range of approved international power sockets. (full details in the technical brochure).



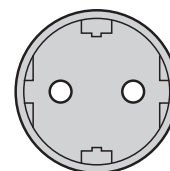
USA



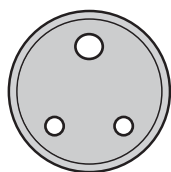
CHINA/AUSTRALIA



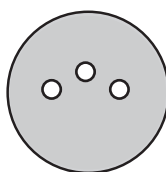
FRANCE/BELGIUM



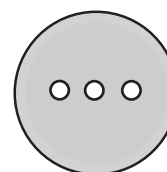
SCHUKO



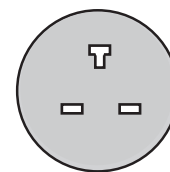
INDIA



SWITZERLAND

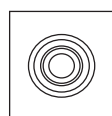


ITALY

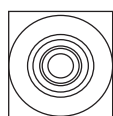


UK 'T'

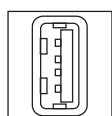
We stock a vast range of Data and AV interfaces that can be fitted within the Protea range (full details in the technical brochure). We also stock the associated cables in lengths from 1 to 10 metres.



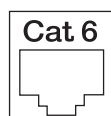
AUDIO



RCA



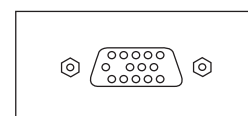
USB



DATA



HDMI



VGA

## DIMENSIONS

Length: Depending on Configuration

Width: 52mm (Approx. 2")

Height: 42mm (Approx. 1<sup>2</sup>/<sub>5</sub>")

Work Surface Thickness:

15mm-35mm (Approx. 3<sup>3</sup>/<sub>5</sub>" - 1<sup>2</sup>/<sub>5</sub>")

## ELECTRICAL

Operating Voltage: 220V - 250V @ 50 Hz

110V - 125V AC @ 60 Hz

Current: 15A

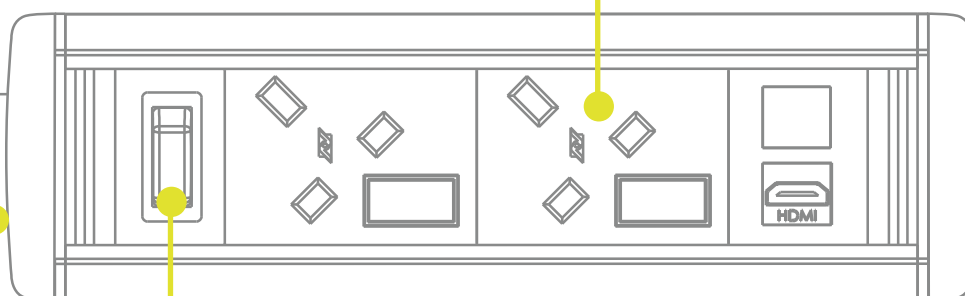
Max Power: 1800W @ 110V - 125V AC

3000W @ 220V - 250V AC

Units can be assembled in almost any configuration with a wide variety of combinations of power outlets, peripherals, colours and finishes.

Hybrid Power capabilities (power & data). Can house one or more circuits in a single unit.

Features a swiveling cable exit with a 90° range to extend cable life by relieving stress where the cable exits the unit.



The unit is able to house a 15A Thermal Overload Switch as well as other standard red and green switches.